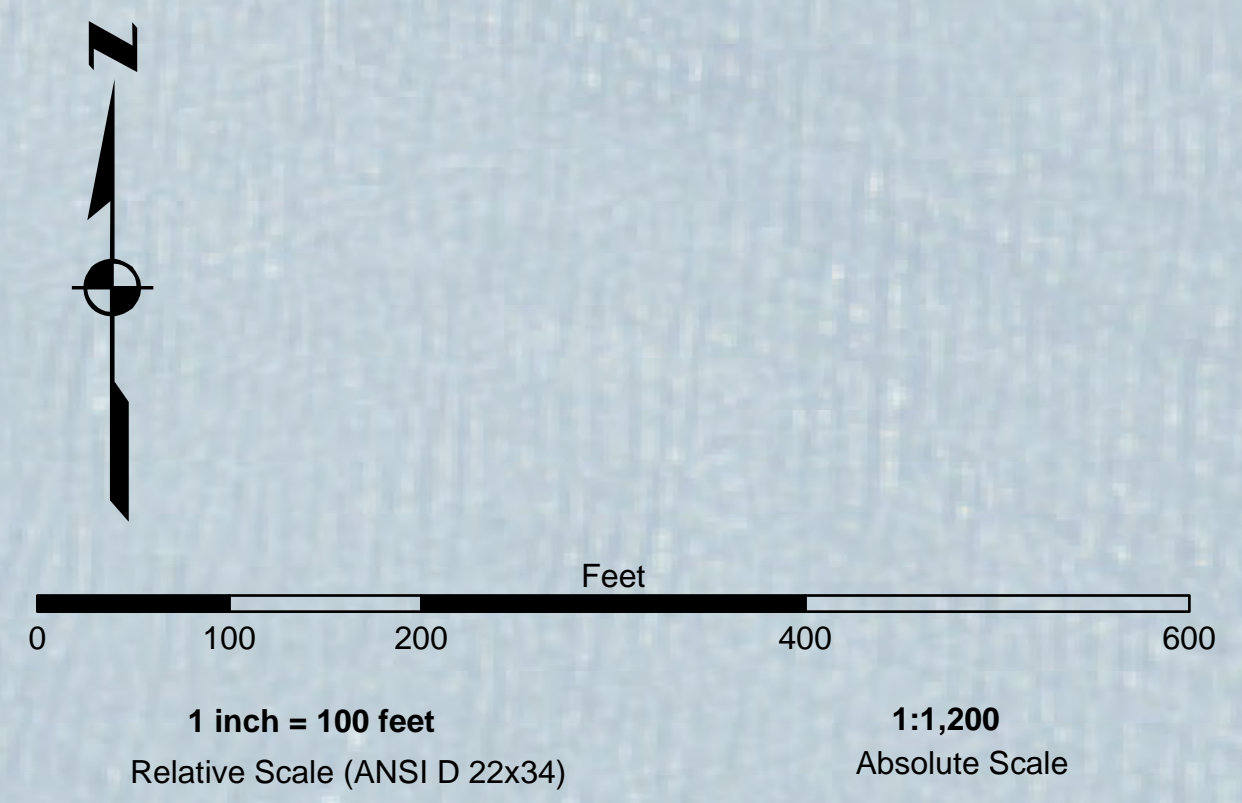
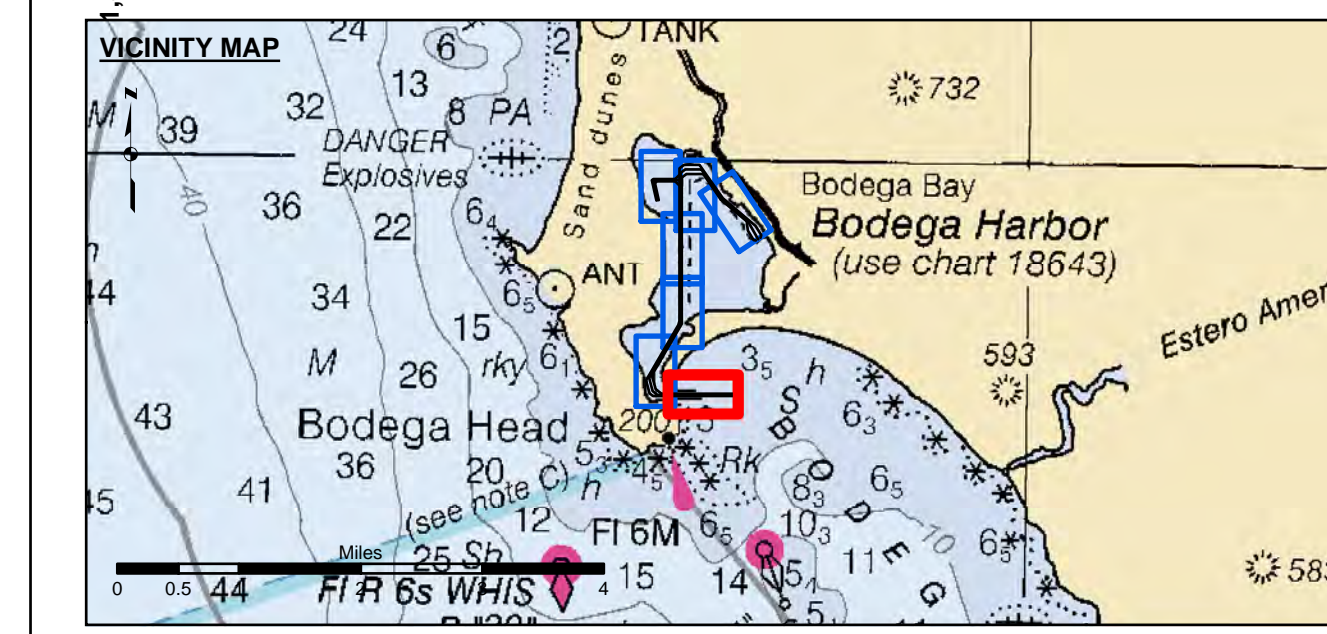


NAD 83 CHANNEL ANGLE POINTS		
△ PT	X	Y
1	6262013.56	1874718.23
2	6258560.66	1874718.23
3	6258402.46	1874840.43
4	6258258.06	1875392.73
5	6259660.46	1877792.03
6	6259710.96	1877978.33
7	6259710.96	1884605.43
8	6259910.96	1884755.43
9	6260578.56	1884755.43
10	6261582.56	1883294.43
11	6263009.76	1882104.53
12	6263256.76	1881692.93
13	6263229.26	1881583.13
14	6263023.46	1881459.73
15	6262913.76	1881487.13
16	6262666.76	1881898.73
17	6262623.46	1882296.43
18	6261507.96	1883226.43
19	6260732.16	1884355.43
20	6260010.96	1884355.43
21	6259810.96	1884205.43
22	6259810.96	1877851.23
23	6258508.16	1875622.33
24	6258666.86	1875015.23
25	6258921.96	1874818.23
26	6262013.56	1874818.23

NAD 83 CENTERLINE ANGLE POINTS		
△ PT	X	Y
C1	6262013.56	1874768.23
C2	6258741.36	1874772.73
C3	6258534.66	1874927.83
C4	6258383.16	1875507.53
C5	6259760.96	1877864.73
C6	6259760.96	1884405.43
C7	6259960.96	1884555.43
C8	6260655.36	1884555.43
C9	6261545.26	1883260.43
C10	6262655.46	1882334.83
C11	6263126.36	1881521.43



DISCLAIMER
 The United States Government furnishes this information as a service to the public. It is not intended to be used for navigation. The user is responsible for the results of any application of this data for other than its intended purpose. The user is responsible for the results of any application of this data for other than its intended purpose. The user is responsible for the results of any application of this data for other than its intended purpose.



Federal Navigation Channel	Beacon, General	Contours
Shoaling Area	Obstruction Point	-12
Placement Area	Navigation Buoy	-11
Anchorage Area	Navigation Buoy	-10
Wreck Area	Shoalest Sounding*	-9
Submerged Wreck		-8
Angle Point		

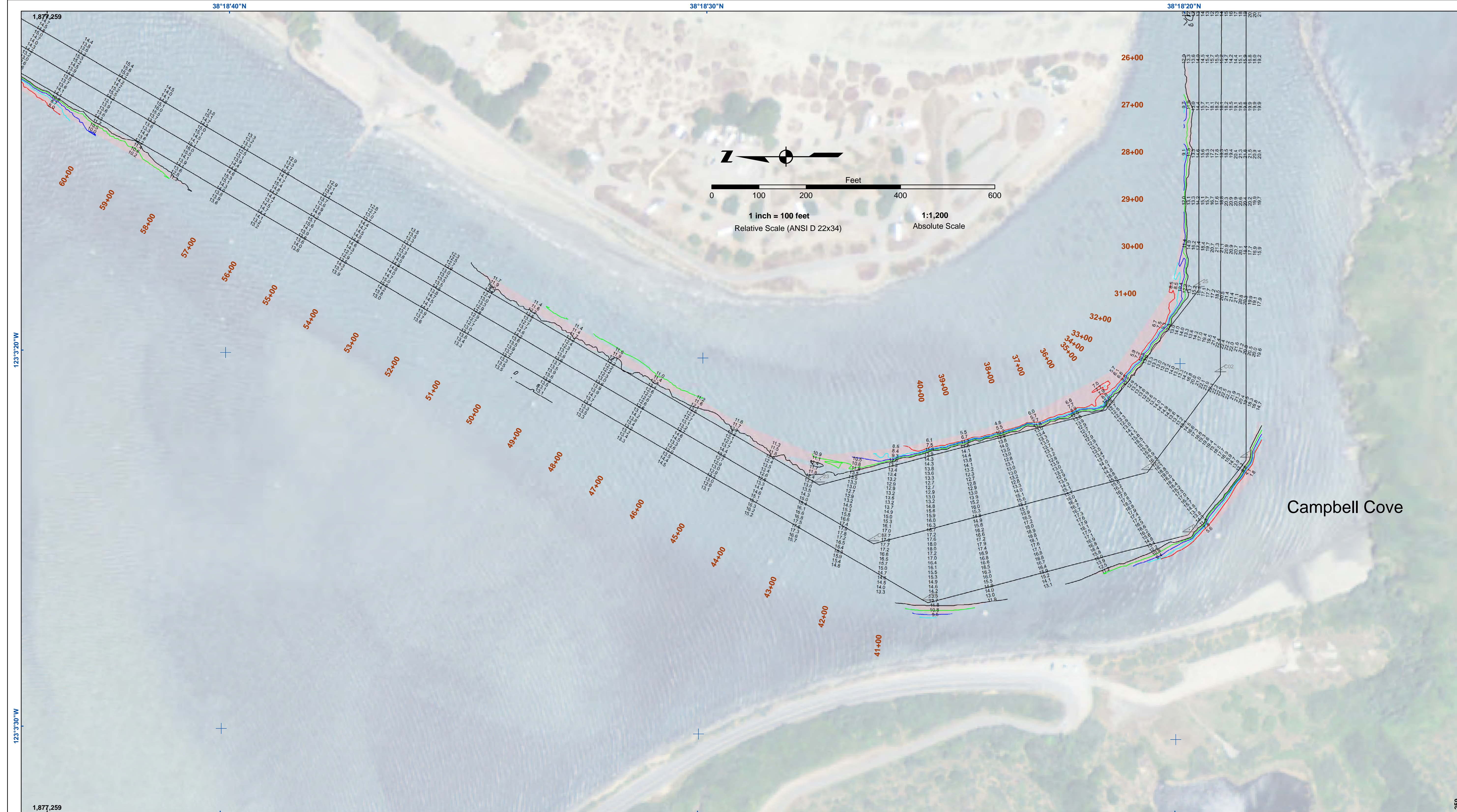
NOTES:
 HORIZONTAL COORDINATE SYSTEM:
 NORTH AMERICAN DATUM OF 1983 (NAD83), PROJECTED TO THE STATE PLANE COORDINATE SYSTEM (SPCS), CALIFORNIA ZONE II. DISTANCE UNITS IN U.S. SURVEY FEET.
 VERTICAL DATUM:
 SOUNDINGS TAKEN BY FATHOMETER AND ARE SHOWN TO THE NEAREST FOOT AND TENTHS OF A FOOT.
 THE INFORMATION DEPICTED ON THIS MAP REPRESENTS THE RESULTS OF A SURVEY CONDUCTED ON THE DATE INDICATED AND CAN ONLY BE CONSIDERED TO REPRESENT THE GENERAL CONDITION EXISTING AT THAT TIME.
 PLANE GRID, BEARING AND COORDINATES ARE BASED ON THE STATE OF CALIFORNIA COORDINATE SYSTEM, LAMBERT CONFORMAL PROJECTION, ZONE II NAD 83, CALIFORNIA, AS DESCRIBED IN SPECIAL PUBLICATION NO. 235, PUBLISHED BY NATIONAL OCEAN SURVEY. BASE MAPS ARE USDA NAIP 2010.
 *SHOALEST SOUNDING PER QUARTER PER REACH

DRAWING NOT TO BE USED FOR NAVIGATION, ONLY CHANNEL CONDITION AT DATE OF SURVEY.
 THE LOCATION OF ALL NAVIGATION AIDS ARE BASED ON INFORMATION PROVIDED BY THE U.S. COAST GUARD. BUOY LOCATIONS REPRESENT THE POSITION OF THE SINKER ONLY.
 SURVEYED BY THE CORPS OF ENGINEERS.
 SOUNDINGS TAKEN BY FATHOMETER AND ARE SHOWN TO THE NEAREST FOOT AND TENTHS OF A FOOT.
 SOUNDINGS ARE BASED ON THE DATUM OF MEAN LOWER LOW WATER AT THE LOCALITY, NAVD 88.
 THE PROJECT DEPTH IS 12 FEET.

PREPARED UNDER THE DIRECTION OF LT COLONEL J. RAYFIELD	Chart Date: Sep 20, 2017
Submitted: Hydro Survey Team Leader	Designed by: PDT
Recommended: Chief, Hydro Survey Section	Drawn by: PDT
Approved: Chief, Construction Branch	

CALIFORNIA
 SONOMA COUNTY
BODEGA BAY CHANNEL
 POST-DREDGE SURVEY
 10 SEPTEMBER 2017

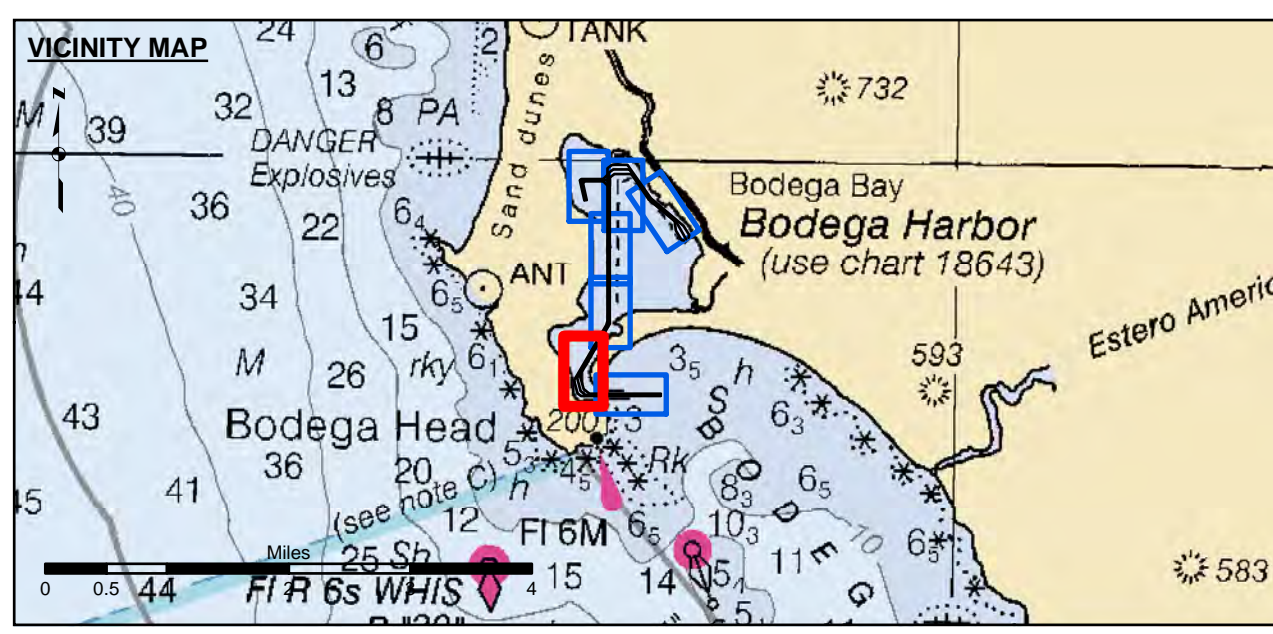
Sheet Reference Number
 1 of 7



DISCLAIMER
 The United States Government furnishes this information as a service to the public. It is not intended to be used for navigation or other purposes. The user is responsible for the results of any application of the data for other than its intended purpose. The recipient may not transfer these data to others without also transferring this disclaimer.

Chart Date:	Sep 20, 2017
Designed by:	PDT
Plotted by:	PDT
Checked by:	PDT
Drawn by:	PDT

SONOMA COUNTY
 CALIFORNIA
BODEGA BAY CHANNEL
 POST-DREDGE SURVEY
 10 SEPTEMBER 2017

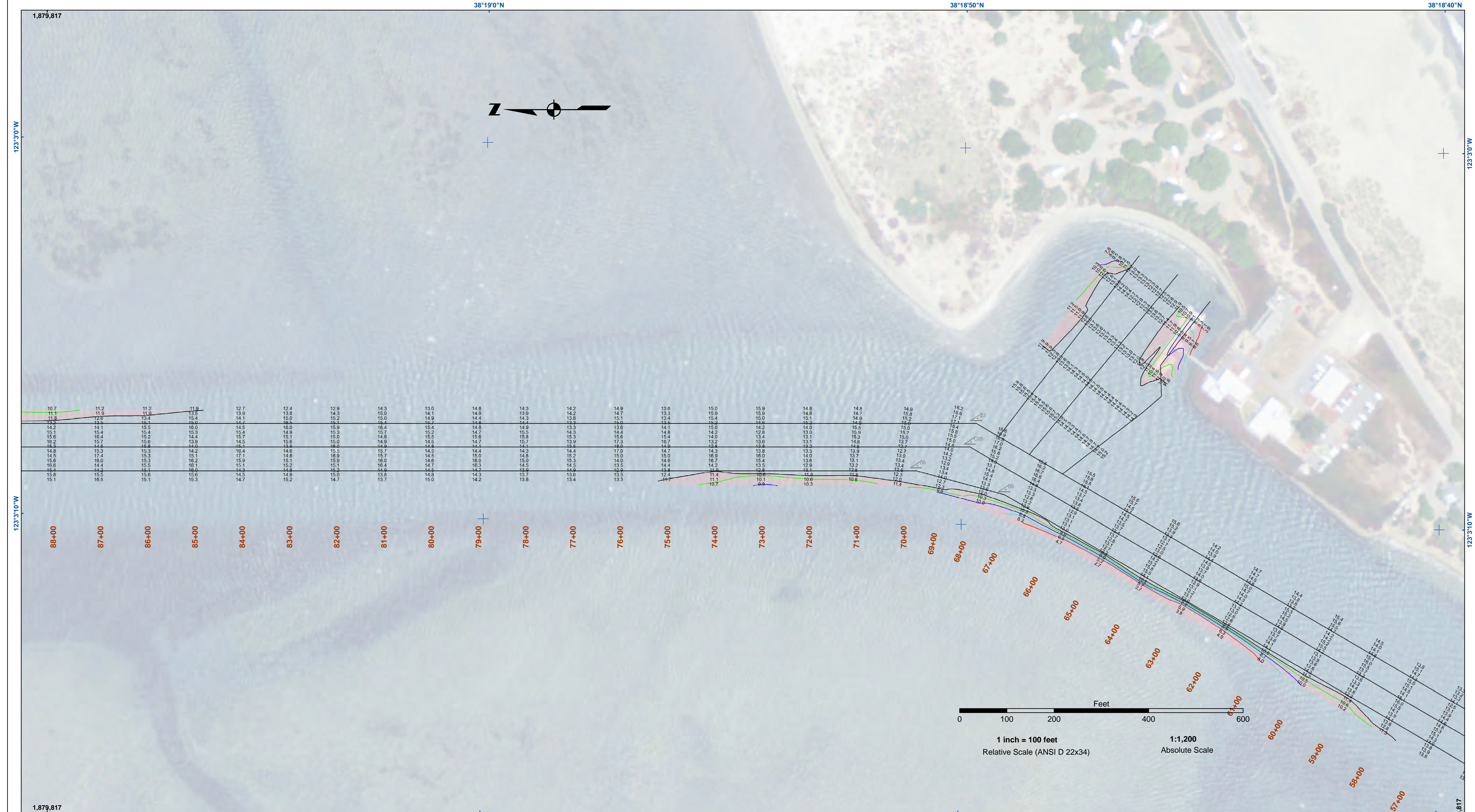


- Federal Navigation Channel
- Shoaling Area
- Placement Area
- Anchorage Area
- Wreck Area
- Submerged Wreck
- Angle Point
- Beacon, General
- Obstruction Point
- Navigation Buoy
- Navigation Buoy
- Shoalest Sounding*
- Contours**
- 12
- 11
- 10
- 9
- 8

NOTES:
 HORIZONTAL COORDINATE SYSTEM:
 NORTH AMERICAN DATUM OF 1983 (NAD83), PROJECTED TO THE STATE PLANE COORDINATE SYSTEM (SPCS), CALIFORNIA ZONE II. DISTANCE UNITS IN U.S. SURVEY FEET.
 VERTICAL DATUM:
 SOUNDINGS ARE SHOWN IN FEET AND INDICATE DEPTHS BELOW MEAN LOWER LOW WATER.
 THE INFORMATION DEPICTED ON THIS MAP REPRESENTS THE RESULTS OF A SURVEY CONDUCTED ON THE DATE INDICATED AND CAN ONLY BE CONSIDERED TO REPRESENT THE GENERAL CONDITION EXISTING AT THAT TIME.
 PLANE GRID, BEARING AND COORDINATES ARE BASED ON THE STATE OF CALIFORNIA COORDINATE SYSTEM, LAMBERT CONFORMAL PROJECTION, ZONE II NAD 83, CALIFORNIA, AS DESCRIBED IN SPECIAL PUBLICATION NO. 235, PUBLISHED BY NATIONAL OCEAN SURVEY. BASE MAPS ARE USDA NAIP 2010.
 *SHOALEST SOUNDING PER QUARTER PER REACH

DRAWING NOT TO BE USED FOR NAVIGATION, ONLY CHANNEL CONDITION AT DATE OF SURVEY.
 THE LOCATION OF ALL NAVIGATION AIDS ARE BASED ON INFORMATION PROVIDED BY THE U.S. COAST GUARD. BUOY LOCATIONS REPRESENT THE POSITION OF THE SINKER ONLY.
 SURVEYED BY THE CORPS OF ENGINEERS.
 SOUNDINGS TAKEN BY FATHOMETER AND ARE SHOWN TO THE NEAREST FOOT AND TENTHS OF A FOOT.
 SOUNDINGS ARE BASED ON THE DATUM OF MEAN LOWER LOW WATER AT THE LOCALITY, NAVD 88.
 THE PROJECT DEPTH IS 12 FEET.
 TIDE GAUGE AT BODEGA BAY COAST GUARD STATION DOCK BASED ON ELEVATION OF 17.50' MLLW ON COAST GUARD BRASS CAP PROPERTY CORNER. ELEVATION ESTABLISHED BY DIFFERENTIAL LEVELS RUN FROM "TIDAL 4 - ROAD" USED, 1941. ELEVATION 20.05' MLLW LOCATED IN THE TOWN OF BODEGA BAY.

US Army Corps of Engineers
 San Francisco District
 1455 Market Street
 San Francisco, CA 94103

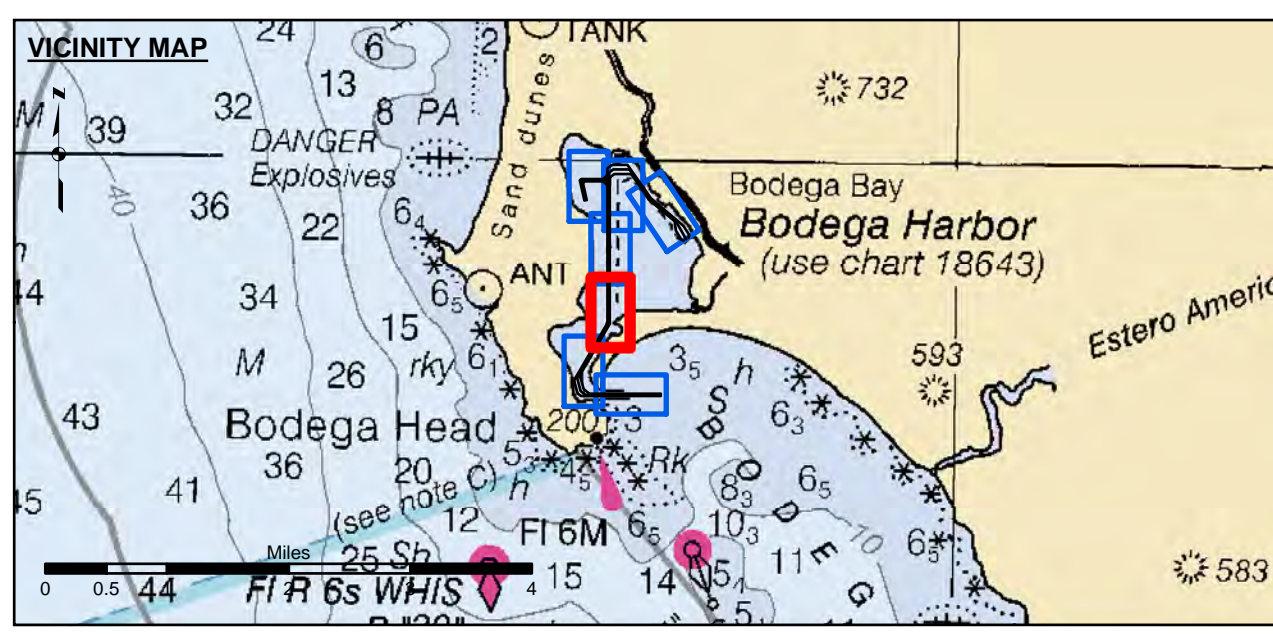


DISCLAIMER
 The United States Government furnishes this information as a service to the public. It is not intended to be used for navigation. The user is responsible for the results of any application of the data for other than its intended purpose. The user is responsible for the results of any application of the data for other than its intended purpose. The user is responsible for the results of any application of the data for other than its intended purpose.

Chart Date:	Sep 20, 2017
Designed by:	PDT
Plotted by:	PDT
Checked by:	PDT
Drawn by:	PDT

CALIFORNIA
 SONOMA COUNTY
BODEGA BAY CHANNEL
 POST-DREDGE SURVEY
 10 SEPTEMBER 2017

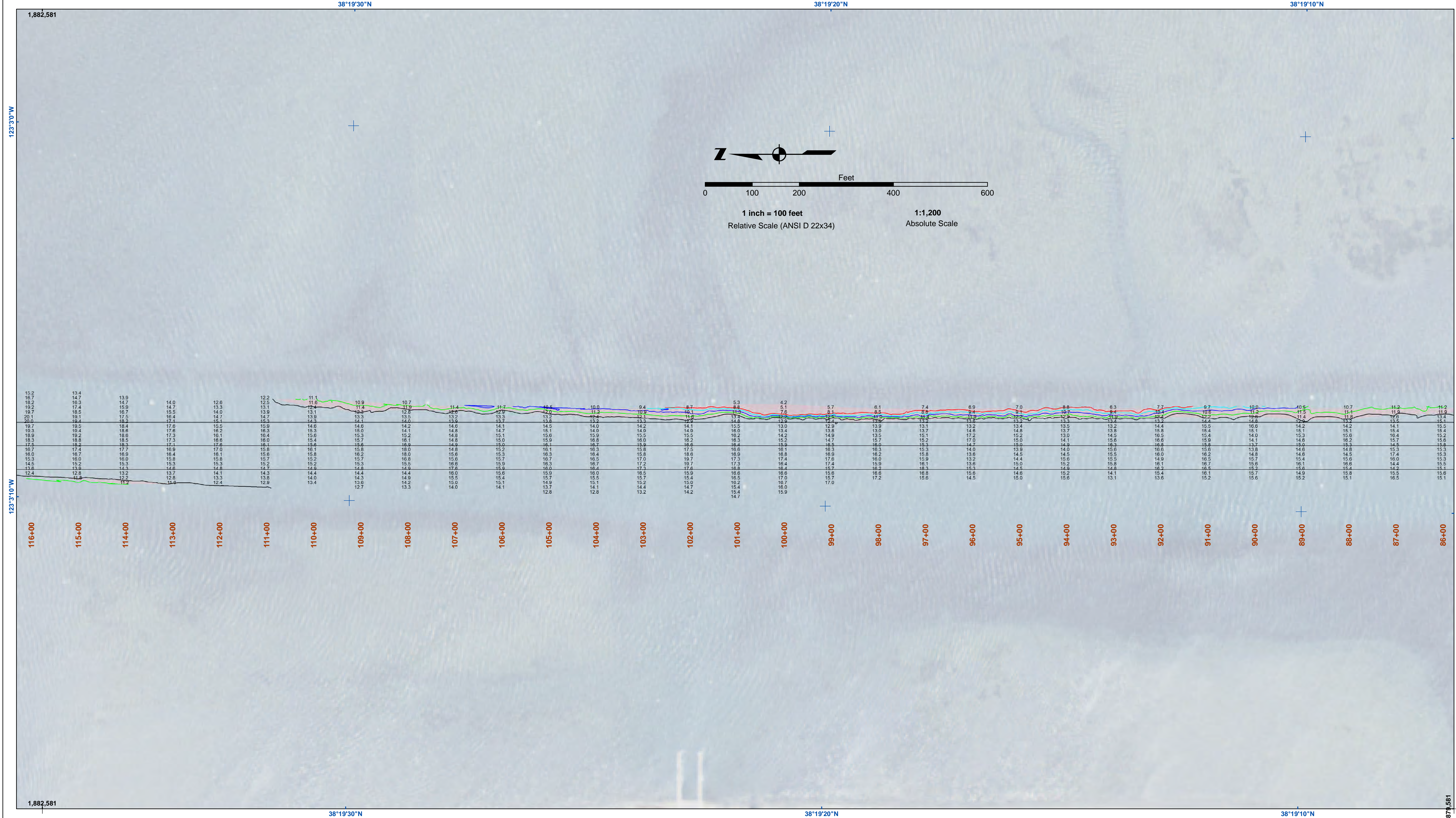
Sheet Reference Number
 3 of 7



- Federal Navigation Channel
- Shoaling Area
- Placement Area
- Anchorage Area
- Wreck Area
- Submerged Wreck
- Angle Point
- Beacon, General
- Obstruction Point
- Navigation Buoy
- Navigation Buoy
- Shoalest Sounding*
- Contours
- 12
- 11
- 10
- 9
- 8

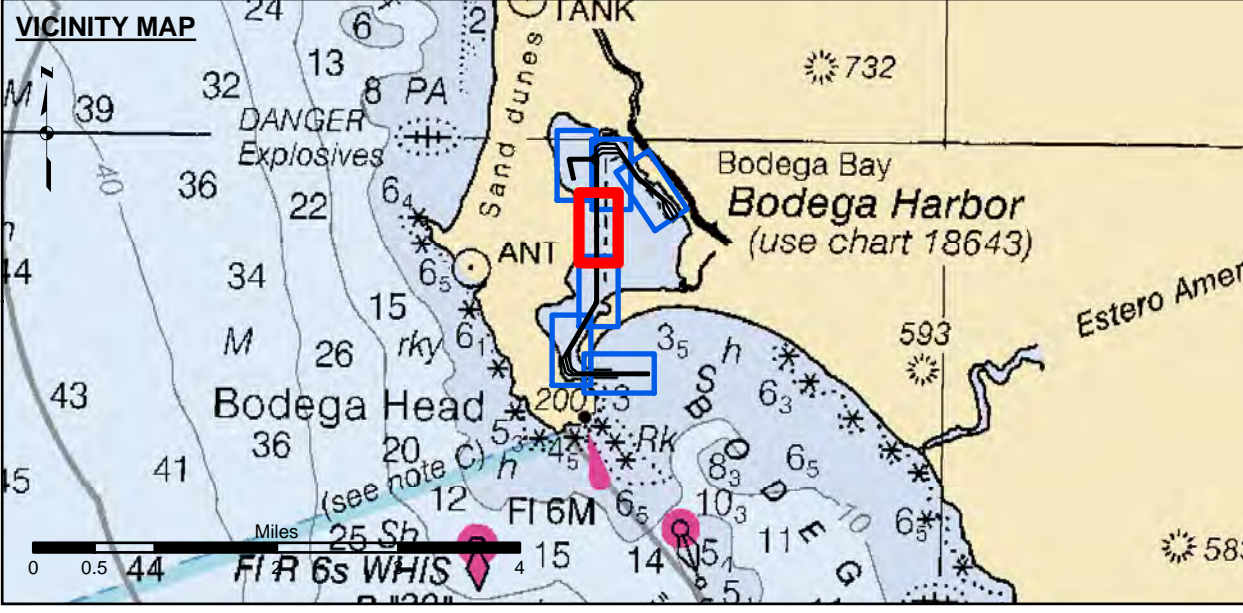
NOTES:
 HORIZONTAL COORDINATE SYSTEM:
 NORTH AMERICAN DATUM OF 1983 (NAD83), PROJECTED TO THE STATE PLANE COORDINATE SYSTEM (SPCS), CALIFORNIA ZONE II. DISTANCE UNITS IN U.S. SURVEY FEET.
 VERTICAL DATUM:
 SOUNDINGS ARE SHOWN IN FEET AND INDICATE DEPTHS BELOW MEAN LOWER LOW WATER.
 THE INFORMATION DEPICTED ON THIS MAP REPRESENTS THE RESULTS OF A SURVEY CONDUCTED ON THE DATE INDICATED AND CAN ONLY BE CONSIDERED TO REPRESENT THE GENERAL CONDITION EXISTING AT THAT TIME.
 PLANE GRID, BEARING AND COORDINATES ARE BASED ON THE STATE OF CALIFORNIA COORDINATE SYSTEM, LAMBERT CONFORMAL PROJECTION, ZONE II NAD 83, CALIFORNIA, AS DESCRIBED IN SPECIAL PUBLICATION NO. 235, PUBLISHED BY NATIONAL OCEAN SURVEY. BASE MAPS ARE USDA NAIP 2010.
 *SHOALEST SOUNDING PER QUARTER PER REACH

DRAWING NOT TO BE USED FOR NAVIGATION, ONLY CHANNEL CONDITION AT DATE OF SURVEY.
 THE LOCATION OF ALL NAVIGATION AIDS ARE BASED ON INFORMATION PROVIDED BY THE U.S. COAST GUARD. BUOY LOCATIONS REPRESENT THE POSITION OF THE SINKER ONLY.
 SURVEYED BY THE CORPS OF ENGINEERS.
 SOUNDINGS TAKEN BY FATHOMETER AND ARE SHOWN TO THE NEAREST FOOT AND TENTHS OF A FOOT.
 SOUNDINGS ARE BASED ON THE DATUM OF MEAN LOWER LOW WATER AT THE LOCALITY, NAVD 88.
 THE PROJECT DEPTH IS 12 FEET.
 TIDE GAUGE AT BODEGA BAY COAST GUARD STATION DOCK BASED ON ELEVATION OF 17.50' MLLW ON COAST GUARD BRASS CAP PROPERTY CORNER. ELEVATION ESTABLISHED BY DIFFERENTIAL LEVELS RUN FROM "TIDAL 4 = ROAD" USED, 1941. ELEVATION 20.05' MLLW LOCATED IN THE TOWN OF BODEGA BAY.



DISCLAIMER
 The United States Government furnishes this information for the general information of the public. It is not to be used for navigation, or for any other purpose, without the express approval of the United States Army Corps of Engineers. The Corps of Engineers makes no warranty, expressed or implied, concerning the accuracy, completeness, or reliability of the information furnished hereunder. The user is responsible for the results of any application of the information furnished hereunder. The Corps of Engineers assumes no liability whatsoever for any loss or damage, including consequential, incidental, or special damages, arising from the use of the information furnished hereunder. The Corps of Engineers makes no representation or warranty, expressed or implied, concerning the accuracy, completeness, or reliability of the information furnished hereunder. The user is responsible for the results of any application of the information furnished hereunder. The Corps of Engineers assumes no liability whatsoever for any loss or damage, including consequential, incidental, or special damages, arising from the use of the information furnished hereunder.

Prepared Under the Direction of TRAVIS J. RAYFIELD LT COLONEL, C.E., DISTRICT ENGINEER	Chart Date: Sep 20, 2017
Submitted: Hydro Survey Team Leader	Designed by: PDT
Recommended: Chief, Hydro Survey Section	Checked by: PDT
Approved: Chief, Construction Branch	Drawn by: PDT

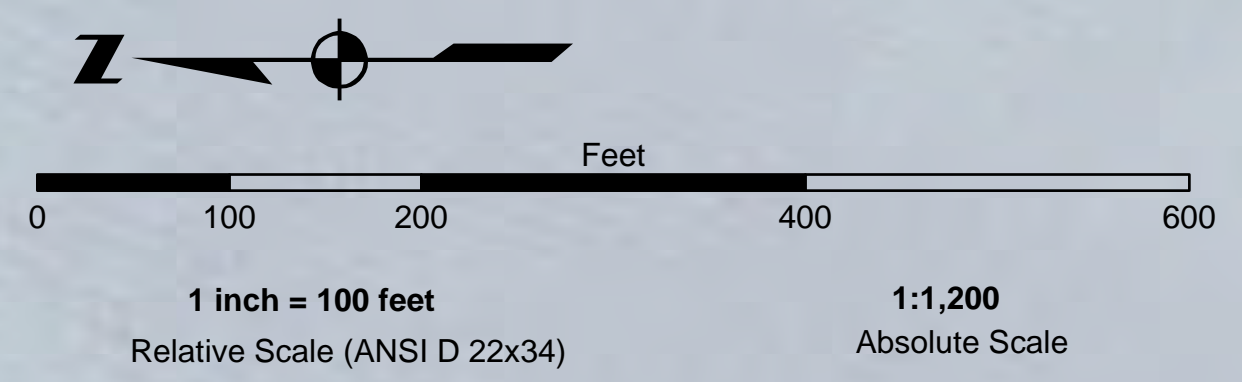
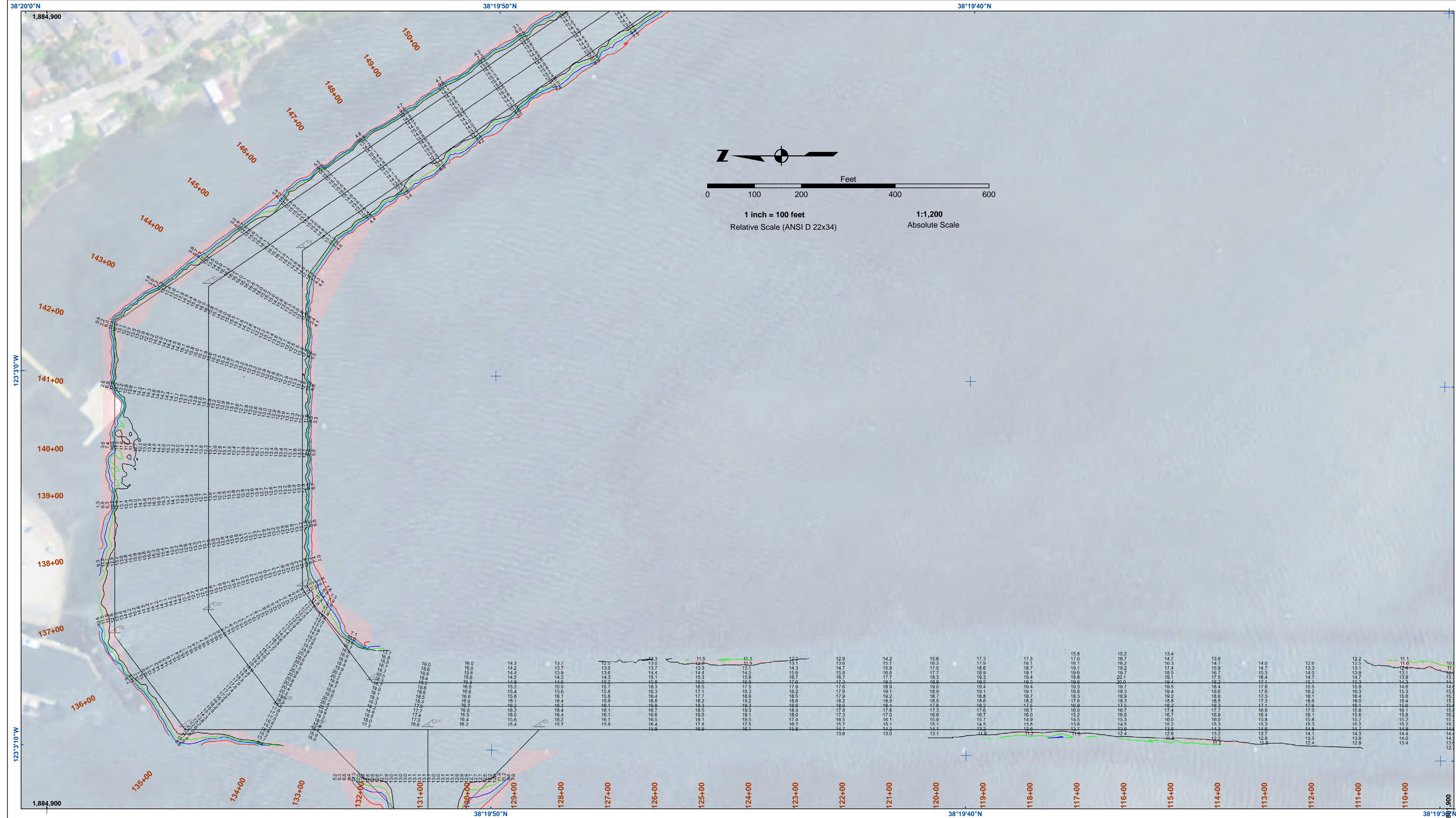


- Federal Navigation Channel
- Shoaling Area
- Placement Area
- Anchorage Area
- Wreck Area
- Submerged Wreck
- Angle Point
- Beacon, General
- Obstruction Point
- Navigation Buoy
- Navigation Buoy
- Shoalest Sounding*
- Contours**
- 12
- 11
- 10
- 9
- 8

NOTES:
 HORIZONTAL COORDINATE SYSTEM:
 NORTH AMERICAN DATUM OF 1983 (NAD83), PROJECTED TO THE STATE PLANE COORDINATE SYSTEM (SPCS), CALIFORNIA ZONE II. DISTANCE UNITS IN U.S. SURVEY FEET.
 VERTICAL DATUM:
 SOUNDINGS TAKEN BY FATHOMETER AND ARE SHOWN TO THE NEAREST FOOT AND TENTHS OF A FOOT.
 THE INFORMATION DEPICTED ON THIS MAP REPRESENTS THE RESULTS OF A SURVEY CONDUCTED ON THE DATE INDICATED AND CAN ONLY BE CONSIDERED TO REPRESENT THE GENERAL CONDITION EXISTING AT THAT TIME.
 PLANE GRID, BEARING AND COORDINATES ARE BASED ON THE STATE OF CALIFORNIA COORDINATE SYSTEM, LAMBERT CONFORMAL PROJECTION, ZONE II, NAD 83, CALIFORNIA, AS DESCRIBED IN SPECIAL PUBLICATION NO. 235, PUBLISHED BY NATIONAL OCEAN SURVEY. BASE MAPS ARE USDA NAIP 2010.
 *SHOALEST SOUNDING PER QUARTER PER REACH
 DRAWING NOT TO BE USED FOR NAVIGATION, ONLY CHANNEL CONDITION AT DATE OF SURVEY.
 THE LOCATION OF ALL NAVIGATION AIDS ARE BASED ON INFORMATION PROVIDED BY THE U.S. COAST GUARD. BUOY LOCATIONS REPRESENT THE POSITION OF THE SINKER ONLY.
 SURVEYED BY THE CORPS OF ENGINEERS.
 SOUNDINGS ARE BASED ON THE DATUM OF MEAN LOWER LOW WATER AT THE LOCALITY, NAVD 88.
 THE PROJECT DEPTH IS 12 FEET.
 TIDE GAUGE AT BODEGA BAY COAST GUARD STATION DOCK BASED ON ELEVATION OF 17.50' MLLW ON COAST GUARD BRASS CAP PROPERTY CORNER. ELEVATION ESTABLISHED BY DIFFERENTIAL LEVELS RUN FROM "TIDAL 4 = ROAD" USED, 1941. ELEVATION 20.05' MLLW LOCATED IN THE TOWN OF BODEGA BAY.

CALIFORNIA
 SONOMA COUNTY
BODEGA BAY CHANNEL
 POST-DREDGE SURVEY
 10 SEPTEMBER 2017

Sheet
Reference
Number
4 of 7



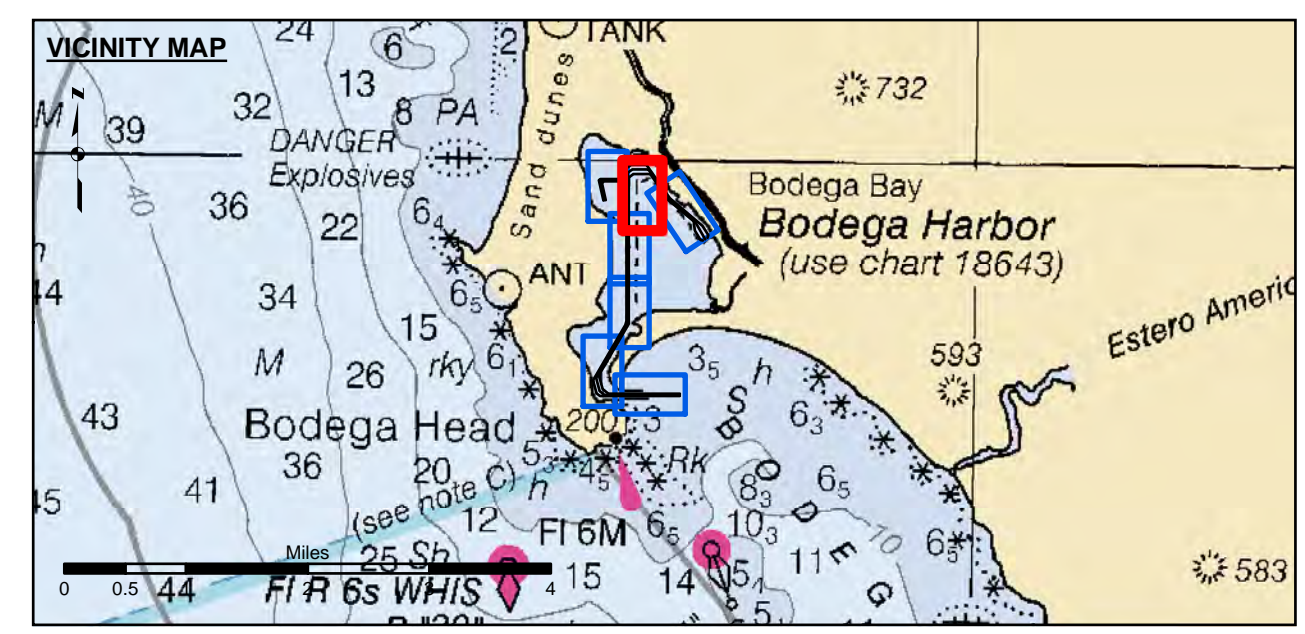
US Army Corps of Engineers
 San Francisco District
 1455 Market Street
 San Francisco, CA 94103

DISCLAIMER
 The United States Government furnishes this information as a service to the public. It is not intended to be used for navigation. The user is responsible for the results of any application of the data for other than its intended purpose. The user is responsible for the results of any application of the data for other than its intended purpose. The user is responsible for the results of any application of the data for other than its intended purpose.

Prepared Under the Direction of:	Chart Date:
TRAVIS J. RAYFIELD	Sep 20, 2017
LT COLONEL, C.E., DISTRICT ENGINEER	Designed by:
Hydro Survey Team Leader	PDT
Recommended by:	Checked by:
Chief, Hydro Survey Section	PDT
Approved:	Drawn by:
Chief, Construction Branch	PDT

CALIFORNIA
 SONOMA COUNTY
BODEGA BAY CHANNEL
 POST-DREDGE SURVEY
 10 SEPTEMBER 2017

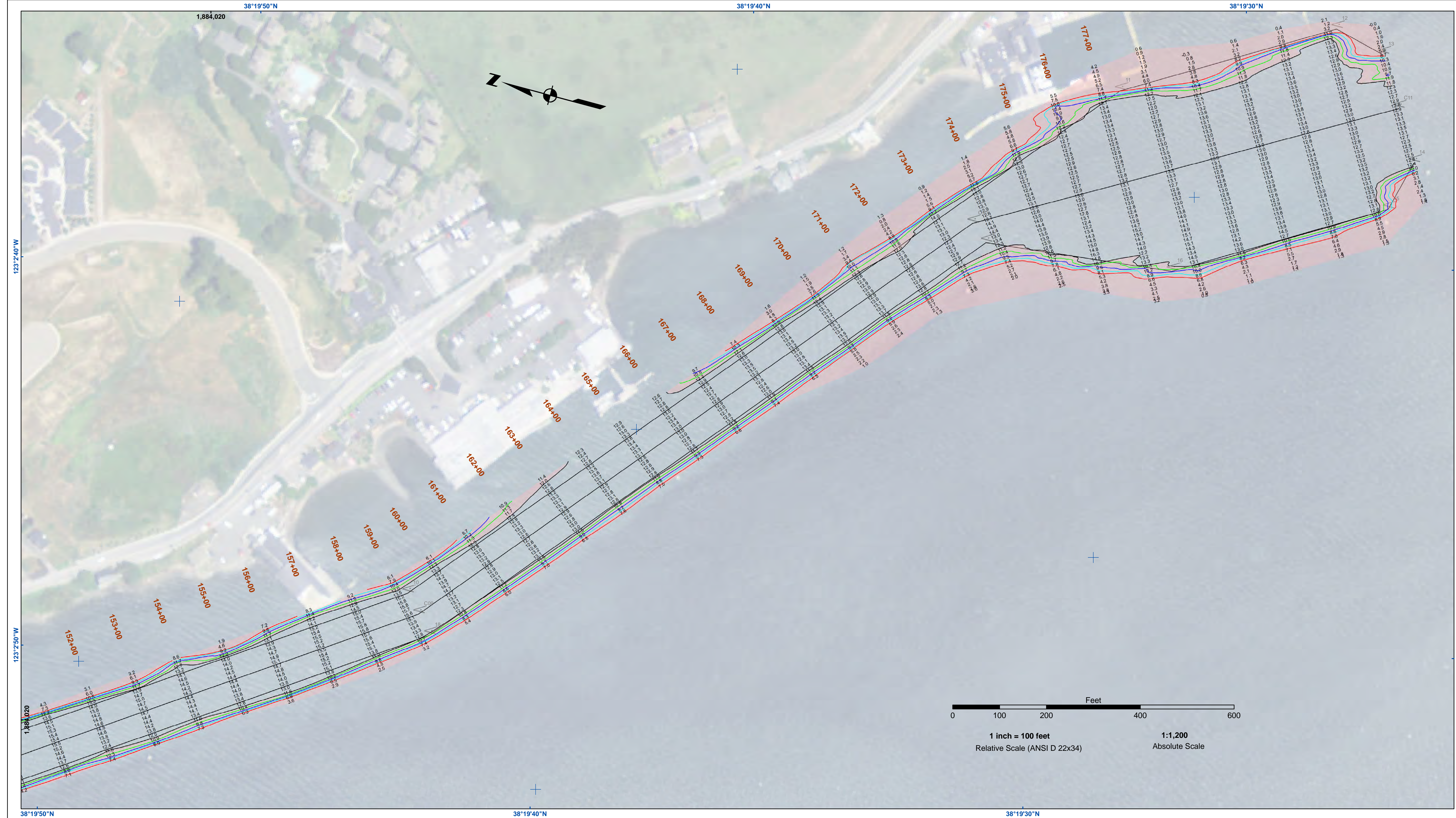
Sheet
 Reference
 Number
5 of 7



- Federal Navigation Channel
- Shoaling Area
- Placement Area
- Anchorage Area
- Wreck Area
- Submerged Wreck
- Angle Point
- Beacon, General
- Obstruction Point
- Navigation Buoy
- Navigation Buoy
- Shoalest Sounding*
- Contours
- 12
- 11
- 10
- 9
- 8

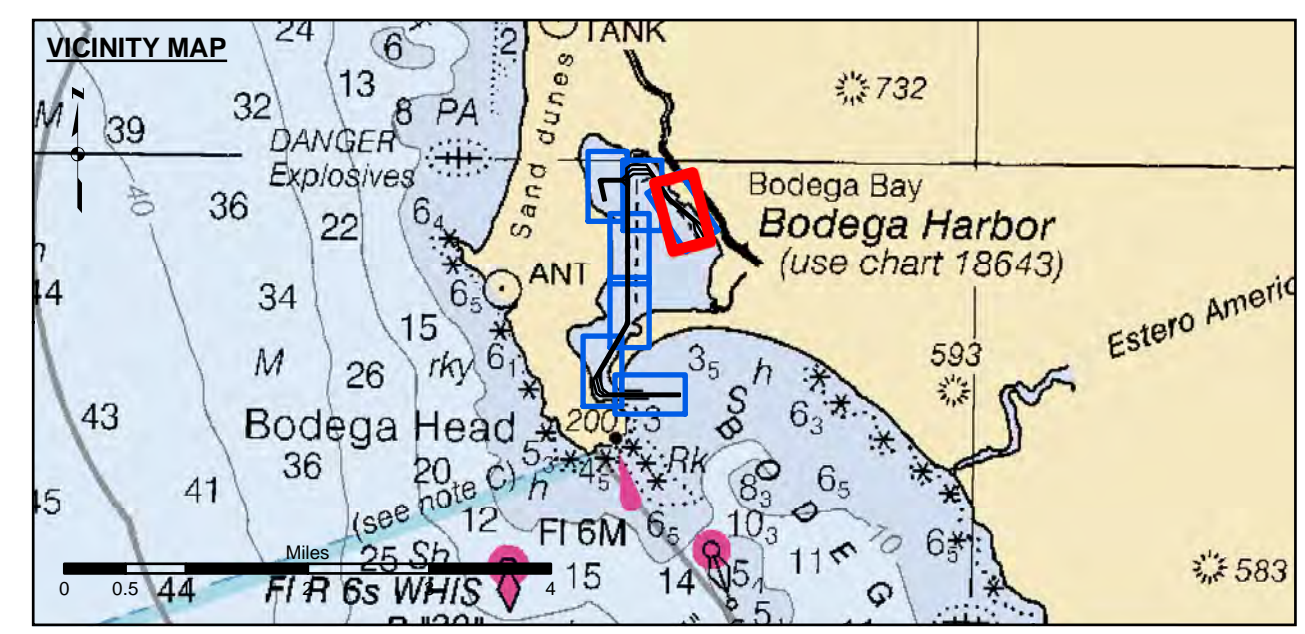
NOTES:
 HORIZONTAL COORDINATE SYSTEM:
 NORTH AMERICAN DATUM OF 1983 (NAD83), PROJECTED TO THE STATE PLANE COORDINATE SYSTEM (SPCS), CALIFORNIA ZONE II. DISTANCE UNITS IN U.S. SURVEY FEET.
 VERTICAL DATUM:
 SOUNDINGS ARE SHOWN IN FEET AND INDICATE DEPTHS BELOW MEAN LOWER LOW WATER.
 THE INFORMATION DEPICTED ON THIS MAP REPRESENTS THE RESULTS OF A SURVEY CONDUCTED ON THE DATE INDICATED AND CAN ONLY BE CONSIDERED TO REPRESENT THE GENERAL CONDITION EXISTING AT THAT TIME.
 PLANE GRID, BEARING AND COORDINATES ARE BASED ON THE STATE OF CALIFORNIA COORDINATE SYSTEM, LAMBERT CONFORMAL PROJECTION, ZONE II NAD 83, CALIFORNIA, AS DESCRIBED IN SPECIAL PUBLICATION NO. 235, PUBLISHED BY NATIONAL OCEAN SURVEY. BASE MAPS ARE USDA NAIP 2010.
 *SHOALEST SOUNDING PER QUARTER PER REACH

DRAWING NOT TO BE USED FOR NAVIGATION, ONLY CHANNEL CONDITION AT DATE OF SURVEY.
 THE LOCATION OF ALL NAVIGATION AIDS ARE BASED ON INFORMATION PROVIDED BY THE U.S. COAST GUARD. BUOY LOCATIONS REPRESENT THE POSITION OF THE SINKER ONLY.
 SURVEYED BY THE CORPS OF ENGINEERS.
 SOUNDINGS TAKEN BY FATHOMETER AND ARE SHOWN TO THE NEAREST FOOT AND TENTHS OF A FOOT.
 SOUNDINGS ARE BASED ON THE DATUM OF MEAN LOWER LOW WATER AT THE LOCALITY, NAVD 88.
 THE PROJECT DEPTH IS 12 FEET.
 TIDE GAUGE AT BODEGA BAY COAST GUARD STATION DOCK BASED ON ELEVATION OF 17.50' MLLW ON COAST GUARD BRASS CAP PROPERTY CORNER. ELEVATION ESTABLISHED BY DIFFERENTIAL LEVELS RUN FROM "TIDAL 4 = ROAD" USED, 1941, ELEVATION 20.05' MLLW LOCATED IN THE TOWN OF BODEGA BAY.



DISCLAIMER
 The United States Government furnishes this information as a service to the public. It is not intended to be used for navigation. The user is responsible for the results of any application of this data for other than its intended purpose. The user is responsible for the results of any application of this data for other than its intended purpose. The user is responsible for the results of any application of this data for other than its intended purpose.

Prepared Under the Direction of	Chart Date
LT COLONEL J. RAYFIELD	Sep 20, 2017
Submittal	Designed by:
Hydro Survey Team Leader	PDT
Recommended	Checked By:
Chief, Hydro Survey Section	PDT
Approved	Drawn by:
Chief, Construction Branch	PDT



Federal Navigation Channel	Beacon, General	Contours
Shoaling Area	Obstruction Point	
Placement Area	Navigation Buoy	
Anchorage Area	Navigation Buoy	
Wreck Area	Shoalest Sounding*	
Submerged Wreck		-12
Angle Point		-11
		-10
		-9
		-8

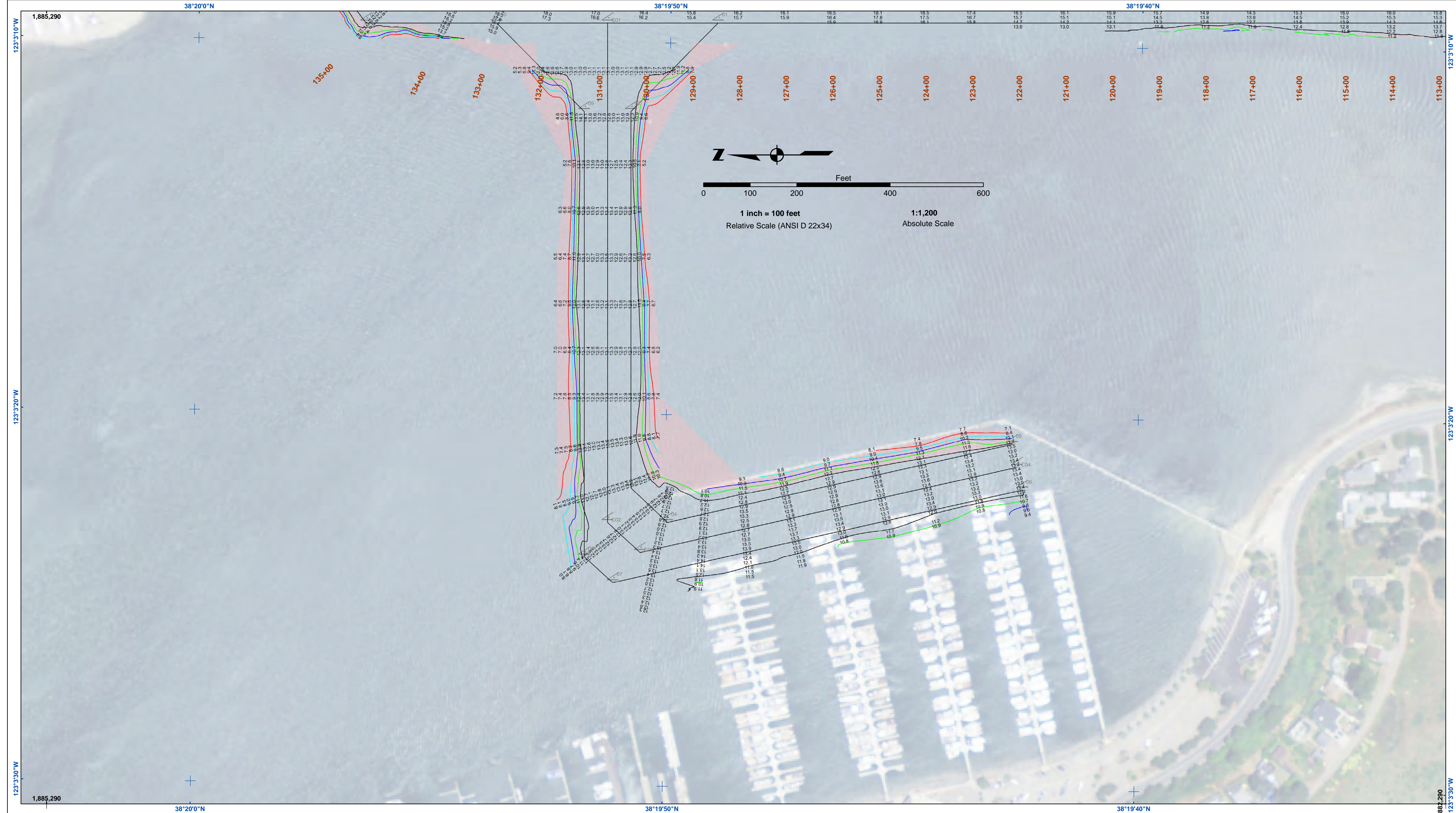
NOTES:
 HORIZONTAL COORDINATE SYSTEM:
 NORTH AMERICAN DATUM OF 1983 (NAD83), PROJECTED TO THE STATE PLANE COORDINATE SYSTEM (SPCS), CALIFORNIA ZONE II. DISTANCE UNITS IN U.S. SURVEY FEET.
 VERTICAL DATUM:
 SOUNDINGS ARE SHOWN IN FEET AND INDICATE DEPTHS BELOW MEAN LOWER LOW WATER.
 THE INFORMATION DEPICTED ON THIS MAP REPRESENTS THE RESULTS OF A SURVEY CONDUCTED ON THE DATE INDICATED AND CAN ONLY BE CONSIDERED TO REPRESENT THE GENERAL CONDITION EXISTING AT THAT TIME.
 PLANE GRID, BEARING AND COORDINATES ARE BASED ON THE STATE OF CALIFORNIA COORDINATE SYSTEM, LAMBERT CONFORMAL PROJECTION, ZONE II NAD 83, CALIFORNIA, AS DESCRIBED IN SPECIAL PUBLICATION NO. 235, PUBLISHED BY NATIONAL OCEAN SURVEY. BASE MAPS ARE USDA NAIP 2010.
 *SHOALEST SOUNDING PER QUARTER PER REACH

DRAWING NOT TO BE USED FOR NAVIGATION, ONLY CHANNEL CONDITION AT DATE OF SURVEY. THE LOCATION OF ALL NAVIGATION AIDS ARE BASED ON INFORMATION PROVIDED BY THE U.S. COAST GUARD. BUOY LOCATIONS REPRESENT THE POSITION OF THE SINKER ONLY.
 SURVEYED BY THE CORPS OF ENGINEERS.
 SOUNDINGS TAKEN BY FATHOMETER AND ARE SHOWN TO THE NEAREST FOOT AND TENTHS OF A FOOT.
 SOUNDINGS ARE BASED ON THE DATUM OF MEAN LOWER LOW WATER AT THE LOCALITY, NAVD 88.
 THE PROJECT DEPTH IS 12 FEET.

TIDE GAUGE AT BODEGA BAY COAST GUARD STATION DOCK BASED ON ELEVATION OF 17.50' MLLW ON COAST GUARD BRASS CAP PROPERTY CORNER. ELEVATION ESTABLISHED BY DIFFERENTIAL LEVELS RUN FROM "TIDAL 4 = ROAD" USED, 1941. ELEVATION 20.05' MLLW LOCATED IN THE TOWN OF BODEGA BAY.

CALIFORNIA
 SONOMA COUNTY
BODEGA BAY CHANNEL
 POST-DREDGE SURVEY
 10 SEPTEMBER 2017

Sheet Reference Number
6 of 7

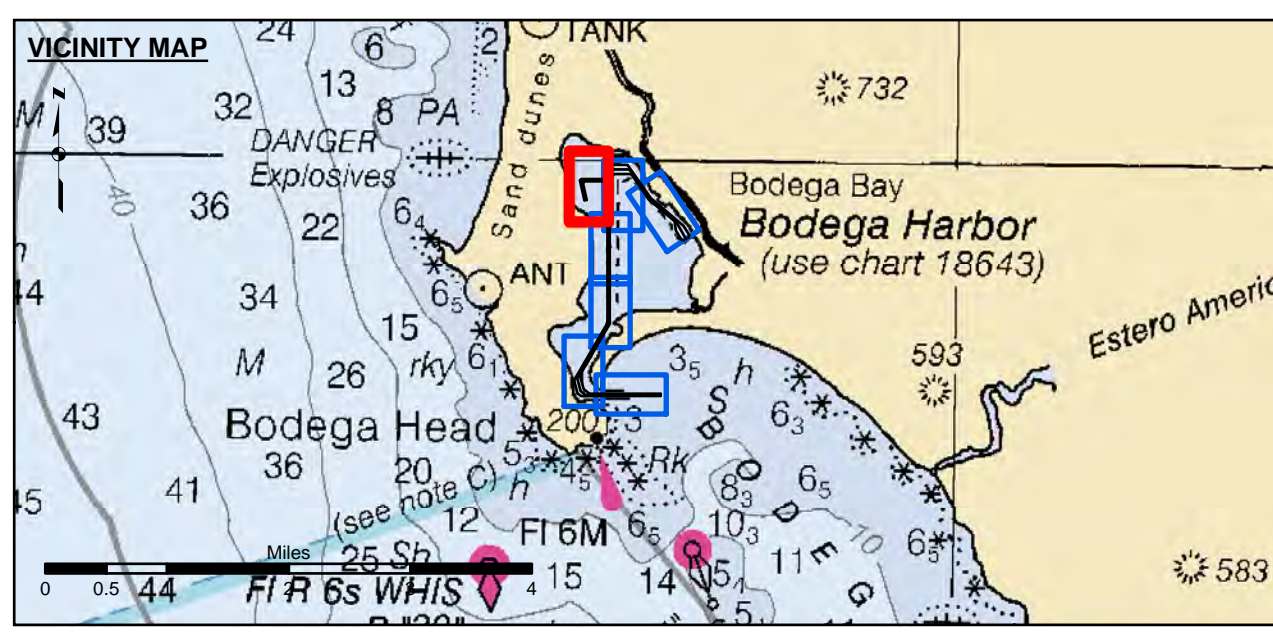


US Army Corps of Engineers
 San Francisco District
 1455 Market Street
 San Francisco, CA 94103

DISCLAIMER
 The United States Government furnishes this information for the use of the recipient in accordance with the terms of the license. The recipient may not transfer this data to others without also transferring this disclaimer. The data represents the results of data collected by the United States Government. The data is not intended for navigation. The user is responsible for the results of any application of the data for other than its intended purpose. The user is responsible for the results of any application of the data for other than its intended purpose. The user is responsible for the results of any application of the data for other than its intended purpose.

Prepared Under the Direction of TRAVIS J. RAYFIELD LT Colonel, C.E., District Engineer	Chart Date: Sep 20, 2017
Submitted by: Hydro Survey Team Leader	Designed by: PDT
Recommended by: Chief, Hydro Survey Section	Plotted by: PDT
Approved by: Chief, Construction Branch	Checked by: PDT
	Drawn by: PDT

CALIFORNIA
 SONOMA COUNTY
BODEGA BAY CHANNEL
 POST-DREDGE SURVEY
 10 SEPTEMBER 2017



- | | | |
|----------------------------|--------------------|-----------------|
| Federal Navigation Channel | Beacon, General | Contours |
| Shoaling Area | Obstruction Point | -12 |
| Placement Area | Navigation Buoy | -11 |
| Anchorage Area | Navigation Buoy | -10 |
| Wreck Area | Shoalest Sounding* | -9 |
| Submerged Wreck | | -8 |
| Angle Point | | |

NOTES:
 HORIZONTAL COORDINATE SYSTEM:
 NORTH AMERICAN DATUM OF 1983 (NAD83), PROJECTED TO THE STATE PLANE COORDINATE SYSTEM (SPCS), CALIFORNIA ZONE II. DISTANCE UNITS IN U.S. SURVEY FEET.
 VERTICAL DATUM:
 SOUNDINGS ARE SHOWN IN FEET AND INDICATE DEPTHS BELOW MEAN LOWER LOW WATER.
 THE INFORMATION DEPICTED ON THIS MAP REPRESENTS THE RESULTS OF A SURVEY CONDUCTED ON THE DATE INDICATED AND CAN ONLY BE CONSIDERED TO REPRESENT THE GENERAL CONDITION EXISTING AT THAT TIME.
 PLANE GRID, BEARING AND COORDINATES ARE BASED ON THE STATE OF CALIFORNIA COORDINATE SYSTEM, LAMBERT CONFORMAL PROJECTION, ZONE II NAD 83, CALIFORNIA, AS DESCRIBED IN SPECIAL PUBLICATION NO. 235, PUBLISHED BY NATIONAL OCEAN SURVEY.
 BASE MAPS ARE USDA NAIP 2010.
 *SHOALEST SOUNDING PER QUARTER PER REACH

DRAWING NOT TO BE USED FOR NAVIGATION, ONLY CHANNEL CONDITION AT DATE OF SURVEY.
 THE LOCATION OF ALL NAVIGATION AIDS ARE BASED ON INFORMATION PROVIDED BY THE U.S. COAST GUARD. BUOY LOCATIONS REPRESENT THE POSITION OF THE SINKER ONLY.
 SURVEYED BY THE CORPS OF ENGINEERS.
 SOUNDINGS TAKEN BY FATHOMETER AND ARE SHOWN TO THE NEAREST FOOT AND TENTHS OF A FOOT.
 SOUNDINGS ARE BASED ON THE DATUM OF MEAN LOWER LOW WATER AT THE LOCALITY, NAVD 88.
 THE PROJECT DEPTH IS 12 FEET.